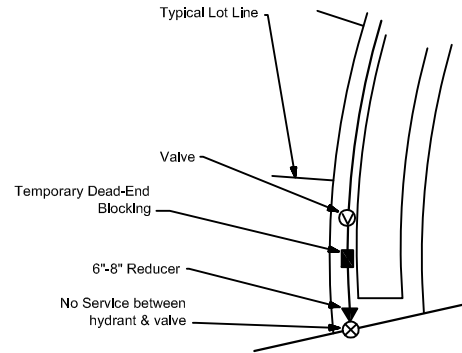
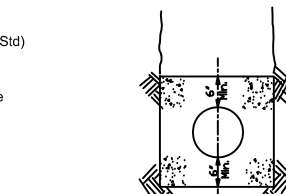
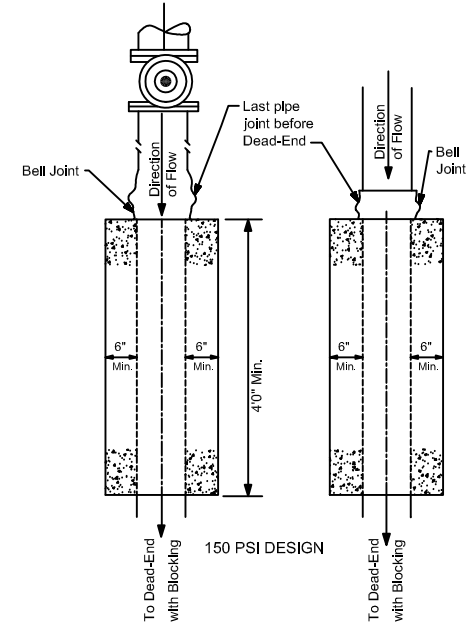


**FUTURE SIDE STREET WITH SERVICE ON BRANCH LINE**



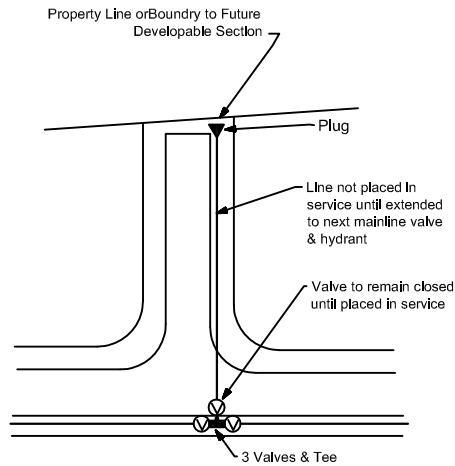
**DEAD-END STREET WITH PROPOSED FUTURE EXTENSION**



Blocking shall be Class "A" Concrete or Flowable Fill as approved by the District.

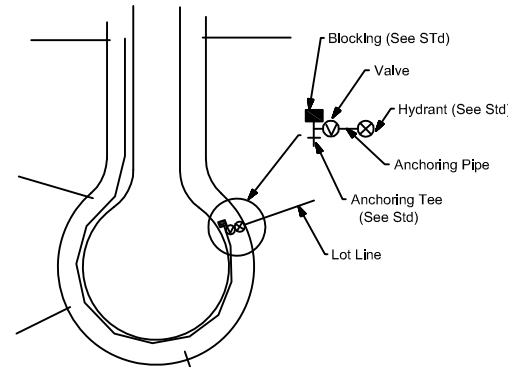
**DETAIL FOR TEMPORARY DEAD-END BLOCKING**

NOTE: Blocking shall be inspected by the District prior to backfilling.



**FUTURE SIDE STREET WITHOUT SERVICES ON BRANCH LINE**

Water Mains under paved surface shall not exceed maximum 30 lin.Ft., this does not apply to streer intersections.



**CUL-DE-SAC WITH DEAD-END FIRE HYDRANT**

REVISION	BY	DATE
1	UMS	1/14/09
	UMS	6/22/04

the 30' under paved surface not to exceed.  
Detail term: dead-end blocking

**N. KY. WATER DISTRICT**

**WATER MAINS TERMINATIONS**

**DRAWN BY: SAR**

**APPROVED: RH**

**DATE: 2/17/10**

**STANDARD DRAWING NO: 101**