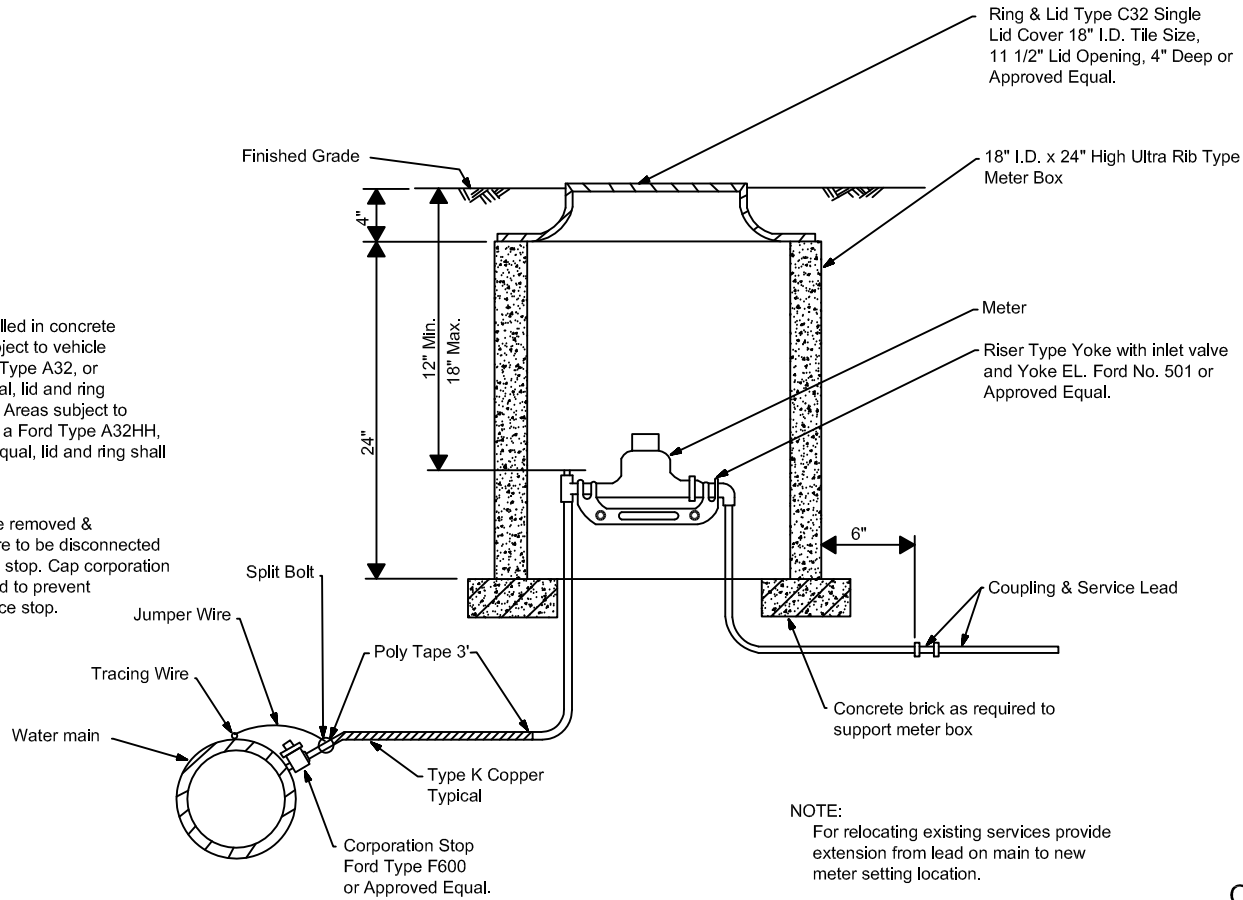


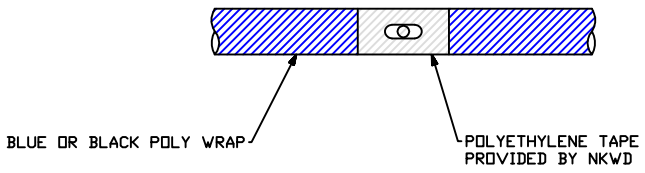
NOTE:
 Services installed in concrete areas, not subject to vehicle traffic, a Ford Type A32, or approved equal, lid and ring shall be used. Areas subject to vehicle traffic, a Ford Type A32HH, or approved equal, lid and ring shall be used.

NOTE:
 Services to be removed & abandoned are to be disconnected at corporation stop. Cap corporation stop if required to prevent leaks or replace stop.



NOTE:
 For relocating existing services provide extension from lead on main to new meter setting location.

ONLY FOR D.I. PIPE



REVISION	BY	DATE
N. KY. WATER DISTRICT		
5/8" & 1" METER SETTING		
DRAWN BY: SAR		
APPROVED: RH		
DATE: 2/17/10		
STANDARD DRAWING NO: 107		