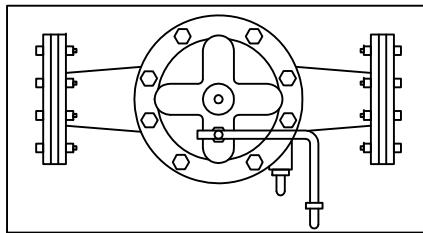
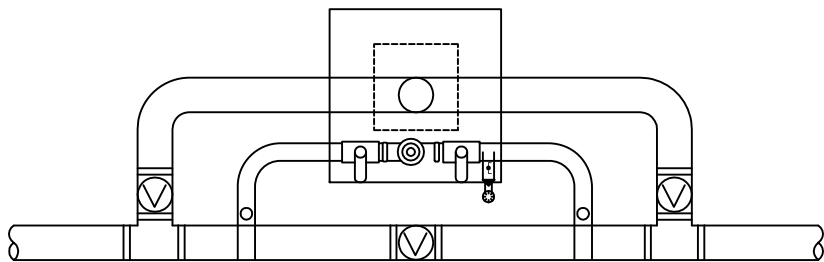


DETAIL



REGULATOR 3" and Larger



GENERAL NOTES

TYPE OF REGULATOR

Hydraulic Regulator

690-01 Reduced Port
90-01 Full Port

Electric Regulator

693-BA-1C Reduced Port
93-BA-1C Full Port

Accessories for Electric Regulator

Stainless Steel Seats with o-ring

Identifier

Position Indicators for Electric Regulators
X105L

Limit Switch Assemblies Single Pole

Part used to identify if valve is opened or closed

X150I2

Limit Switch Assemblies Single Pole

Valve with Speed Control - optional

Stops Water Hammer

Pressure Gauge - installed on low flow pipe between isolation valve and outlet of pressure control of P.R.V. This should consist of isolation ball valve to pressure gauge and a pressure bleed off.

Accessories for Hydraulic Regulator

Stainless Steel Seats with o-ring

X101-Site Tube

Part used to identify if valve is opened or closed

Valve with Speed Control - optional

Stops Water Hammer

Pressure Gauge - installed on low flow pipe between isolation valve and outlet of pressure control of P.R.V. This should consist of isolation ball valve to pressure gauge and a pressure bleed off.

Low Flow 2"

2" Low Flow- Shall have unions installed for easy removal of small regulator-Regulator can be the same as District keeps in stock

2" shall be tapped with Brass Saddle and shall be Type K copper

2" shall have Ball valves installed

Low Flow 3" and Larger

3" and Larger- Shall be Cla Val and installed as same as main regulator

3" and Larger Shall have tee installed and all piping shall be Class 53 Ductile Iron

Regulator Vault

Follow all specifications for Meter Vault-the following specifications also must be installed

Conduit for Electric shall be run on the bottom of the top slab Electric shall not be run on the floor of the pit
A light socket and switch shall be installed-needed if worked on at night

REVISION	BY DATE	
	BY	DATE
N. KY. WATER DISTRICT		
REGULATOR VAULTS		
DRAWN BY: SAR		
APPROVED: <i>RH</i>		
DATE: 2/17/10		
STANDARD DRAWING NO: 210		